

Our Mission

To empower all Waukee Community School District students to achieve their aspirations by enhancing their educational experience.

Who can apply for a grant?

- All employees within the Waukee Community School District (WCSD)
- Students currently enrolled within WCSD, with partnership and approval from a district employee
- District-registered parent organizations, such as PTOs, with approval from the correlating school principal

Priority Outcome Area: Innovation

- The Foundation prioritizes grant awards that illustrate a willingness to take risks, disrupt the norm, and respond to change with creativity and solutions.
- The Foundation's emphasis on funding innovation also indicates a de-emphasis on funding standardization across classrooms, schools, or the district.

Priority Outcome Area: Wellness

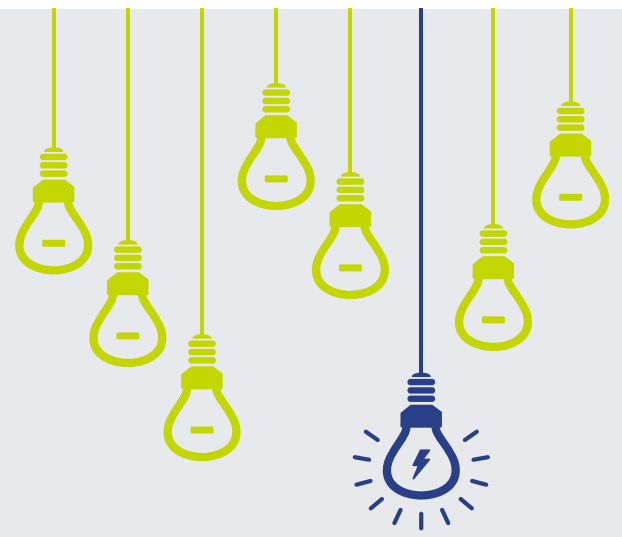
- The Foundation prioritizes grant awards that elevate the social, emotional, mental, and physical wellness of students and employees across the district.

Priority Outcome Area: Sense of Belonging

- The Foundation prioritizes grant awards that seek to create a strong sense of belonging for all students and employees.
- The Foundation recognizes that our school district is rapidly becoming more racially, culturally, linguistically, and ethnically diverse and will prioritize grant awards that seek to elevate the voices and stories that celebrate the beauty and strength in diversity.

Financial Hardship

- The Foundation prioritizes grant awards in support of needs that arise from socioeconomic circumstances and financial hardship.



Grant Cycles

- Applications can be submitted through the Waukee Community Schools Foundation website at any time during the calendar year.
- The Foundation strongly encourages all applicants to meet with the Foundation's staff prior to applying to discuss and develop the proposal.
- Applications are reviewed and approved bimonthly.

Grant Considerations

- The Foundation prioritizes grant awards in support of the Foundation's three outcome areas: Innovation, Wellness, and Sense of Belonging.
- The Foundation will work to ensure equitable distribution across school type: K-5th grades; 6-7th grades; 8-9th grades; 10-12th grades.
- The Foundation will work to ensure equitable distribution between Waukee High School and Waukee Northwest High School feeder schools.

Award Notifications

- All applicants will receive notification outlining the award approval, denial, or a request for more information via email, from grants@waukeeschoolsfoundation.org
- No other communication related to approval or denial of the grant is considered official.
- All grant dollars will be distributed through the Waukee Community School District.
- No grant dollars will be directly distributed to an individual, group, or external organization without written exception by the Foundation's Board.

Questions?

Contact Adrienne Towe, Executive Director
Adrienne@WaukeeSchoolsFoundation.org